



Co-funded by the
Erasmus+ Programme
of the European Union

GA n° 2019-1-CY01-KA204-058266



NEWSLETTER N° 2

October 2020

OUTPUT 1 – OUTCOMES OF THE FOCUS GROUPS WITH CAREGIVERS AND PROFESSIONALS

The first operational phase of the project, that has the objective of producing a report aimed to set the scene for the development of educational programme and the App to prevent breast-cancer across women who are informal carers, has recently ended. The drafted report provides the point of view of relevant stakeholders' (i.e. experts, end-users associations and end-users caregiver), their perspectives on educational and training opportunities as well as on barriers in promoting breast cancer prevention.

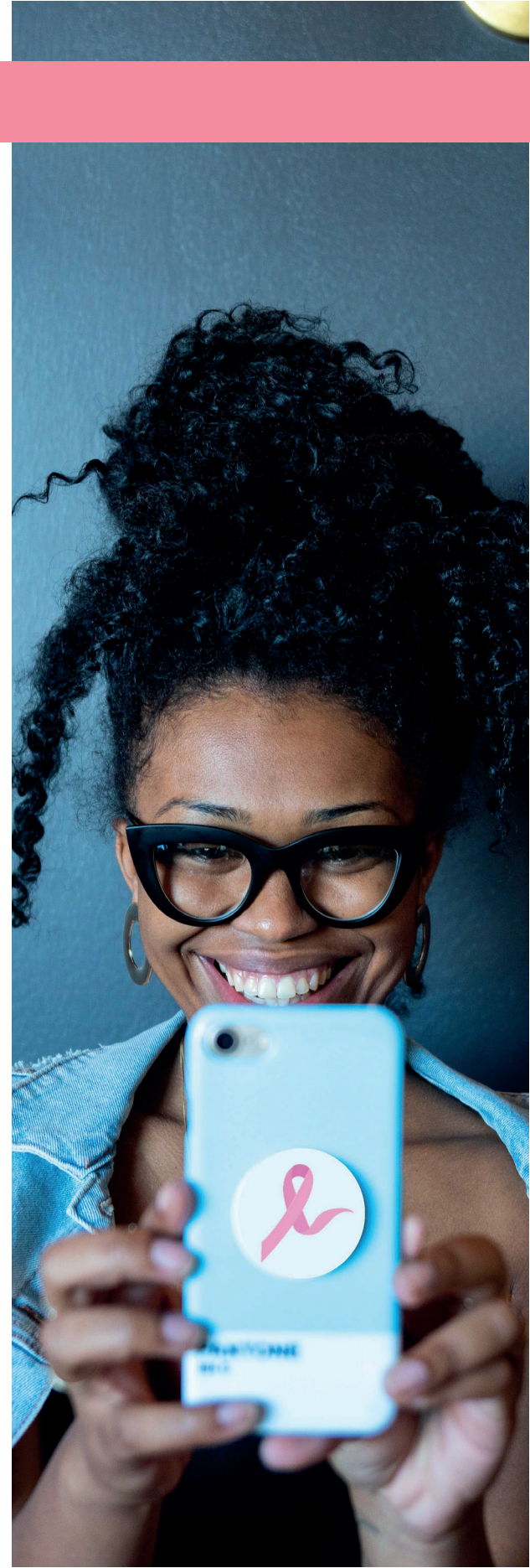
The aim of the focus groups with caregivers was to facilitate participants to discuss their knowledge of breast cancer and screening guidelines and recommended practices; individual, structural, and cultural barriers to screening; attitudes on mammogram screening, breast cancer experiences (personal or of a significant other), self-rated risk for breast cancer, current state of mobile phone usage habits, including text and picture messaging, needs for mobile based learning applications, readiness for mobile-based learning applications and ideas regarding the most effective content, type and frequency of messages the interventions to promote screening.

The aim of the focus groups with professionals was to gather health professional community's opinions and describe their views on the educational priorities about breast cancer and breast cancer prevention including screening (e.g. gaps in knowledge, concerns, and priorities).

In the period between January to May 2020, 8 focus groups (FGs) were organized by the members of the Prolepsis partnership to gain an insight into informal carers' knowledge on Breast Cancer (BC) and their perceptions on educational and training opportunities and barriers in assuming preventive behaviours.

Five focus groups consisted of informal carers and 3 of health professionals were organized in Italy, Portugal and Cyprus. More specifically, 26 informal cares (aged 57+) and 18 health professionals (aged 35 +) participated to the research.

Each partner was responsible to organize the focus groups in own country;



however, all followed the research protocol prepared by the CUT team. All partners analyzed the data that emerged from the discussions while the final analysis and data synthesis was performed by the CUT team. Results of the FGs were analyzed manually adopting the framework analysis technique (Krueger & Casey, 20014; Rabiee, 2004), a case and theme-based approach that reduces data through summarization and synthesis using a matrix. This method helped to order data, allowing the researchers to analyze them both by case (i.e. the carer's perspective) and by theme.

THE IO 1 REPORT IN ENGLISH IS DOWNLOADABLE FROM THE PROLEPSIS WEBSITE



PROLEPSIS NEXT STEP INTELLECTUAL OUTPUT 2

This intellectual output will include the development of the training contents which will be included into the APP (IO3), such as suggestions for activities to be performed in class (i.e. face to face approach); power points and other supporting material for trainers, video tutorials on BSE steps, mammograms and Clinical Breast Examination (CBE) procedures.

2' MEETING TELCO BY ZOOM

Because of the limitations due to COVID-19, the 2nd partnership meeting was held by Zoom, on the 1st and 2nd of July 2020. During the two days of the meeting, upcoming tasks and next steps have been agreed among participants, accordingly to the workplan of the project. The main focuses of the discussion were plans for Intellectual Output 2, together with a discussion of the outcomes of the research phase and how they can be incorporated into the training programme and the APP.

Next transnational partner meeting will be organised in March 2021 in Carpi (Italy).

Disclaimer

The European Commission support for the production of this publication does not constitute an endorsement of the contents which re-lects the views only of the authors, and the Commission cannot be held responsible for any use which may be made of the information contained therein